

Rubidium Application

Version: 2.0.152
10. December 2008

Font compiler

Alpermann+Velte

1	INTRODUCTION	2
1.1	FONT COMPILER	2
1.1.1	Starting the font compiler	2
2	QUICK START GUIDE	3
2.1	INSTRUCTIONS	3
2.1.1	Download the TCF file	3
2.1.2	Start the font compiler	3
2.1.3	Open the TCF-file	3
2.1.4	Choose new font	3
2.1.4.1	Select character set	4
2.1.4.2	Display preview window	5
2.1.4.3	Choosing options	5
2.1.4.4	Adding the font	5
2.1.5	Import fonts	6
2.1.6	Save TCF file	7
2.1.7	Flashing the TCF-file to the module	7

1 Introduction

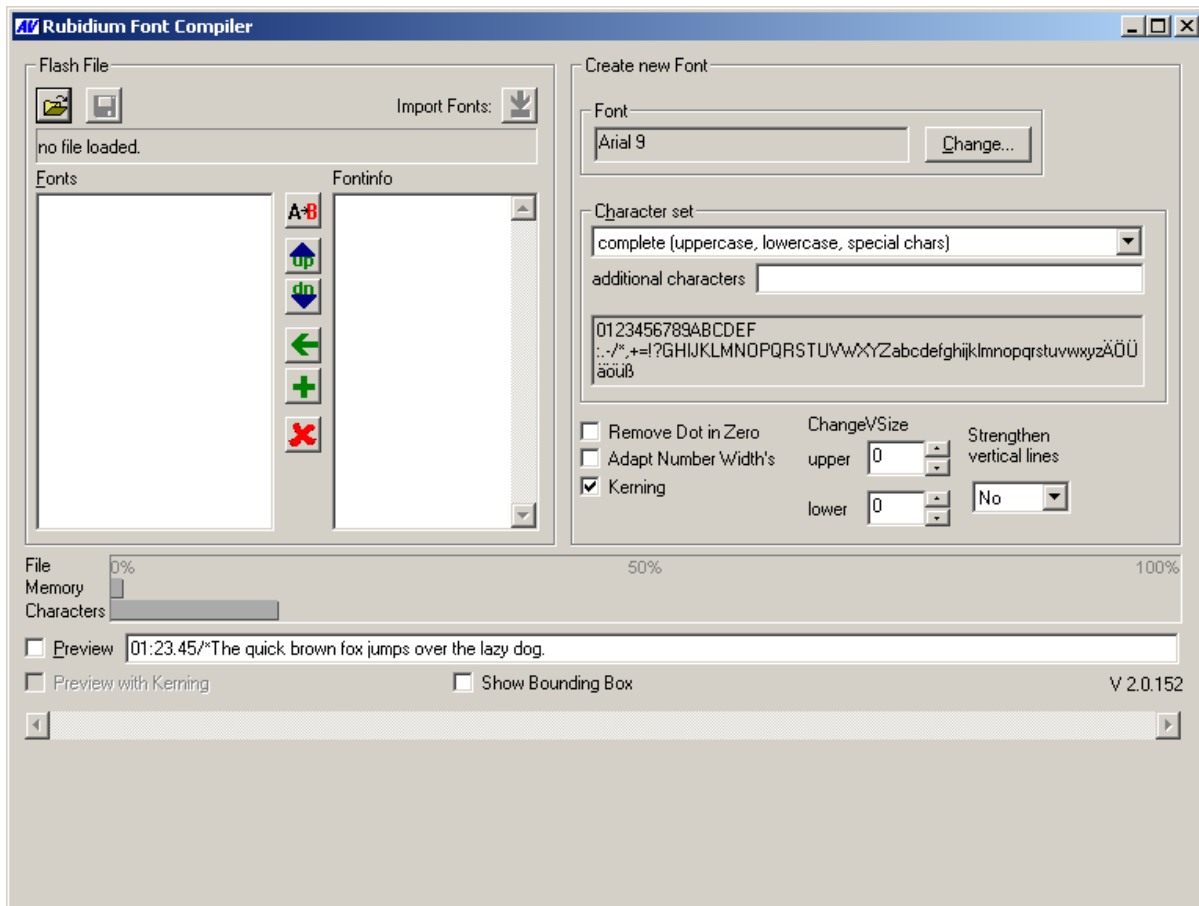
The Rubidium modules AT, AV, DT, DV, HT and HV all include a burn-in(insert) function that permits the use of different styles of fonts. This is possible by uploading the user-defined fonts, together with the applicable modules firmware into the module. Any fonts, which are available on the operating PC, can be implemented. Please note that the font manufacturers terms of the use and duplication of fonts licensing rules must be strictly followed and that the user is liable for conformity with all local applicable laws.

1.1 Font Compiler

The font for a Rubidium module is tied together with the modules firmware. To change the font available in a module, the firmware must be loaded onto a hard disk along with the font compiler program, so that the firmware can be changed to include the required font and then via a new firmware update process, be uploaded into the module.

1.1.1 Starting the font compiler

The font compiler is a part of the program "Rubidium Config", which is also used to program and configure the Rubidium module. After starting the program "Rubidium Config", open the menu "Tools / Font Compiler..." to get to the "TCFonts" screen seen in the below screenshot:



2 Quick start guide

In this below shown example we will be changing the forth available font called "35" into a "Bitstream Vera Sans Mono 60 bd" when using a Rubidium High Definition "HT module".

2.1 Instructions

2.1.1 Download the TCF file

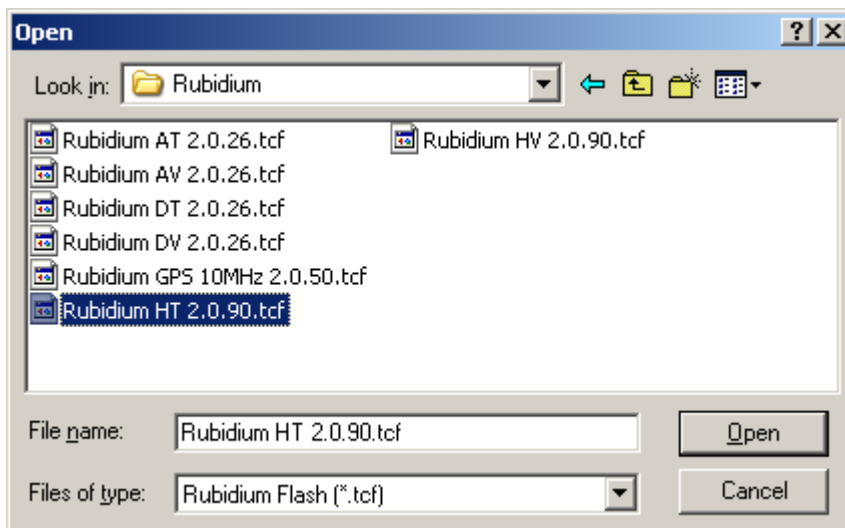
The fonts included in a Rubidium module are tied together with the modules firmware in form of a TCF file. The latest firmware files can be downloaded from the service section of our website <http://www.alpermann-velte.com/service/software/software.html>. In this example, the file name for the HT module we want to update is called http://www.alpermann-velte.com/software/rub_ht.zip. Unzip this TCF file onto a local hard drive.

2.1.2 Start the font compiler

The font compiler is a part of the program "Rubidium Config", which is also used to program and configure the Rubidium module. If you do not yet have this program on your local hard drive, it also can be downloaded from the above-mentioned page in the service section of our website. After starting this program, open and start the menu tab "Tools / Font Compiler..."

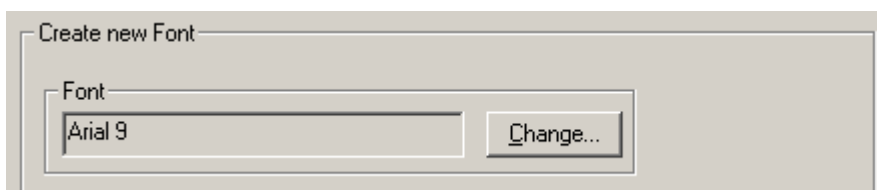
2.1.3 Open the TCF-file

Select the applicable TCF file by using this tab  :



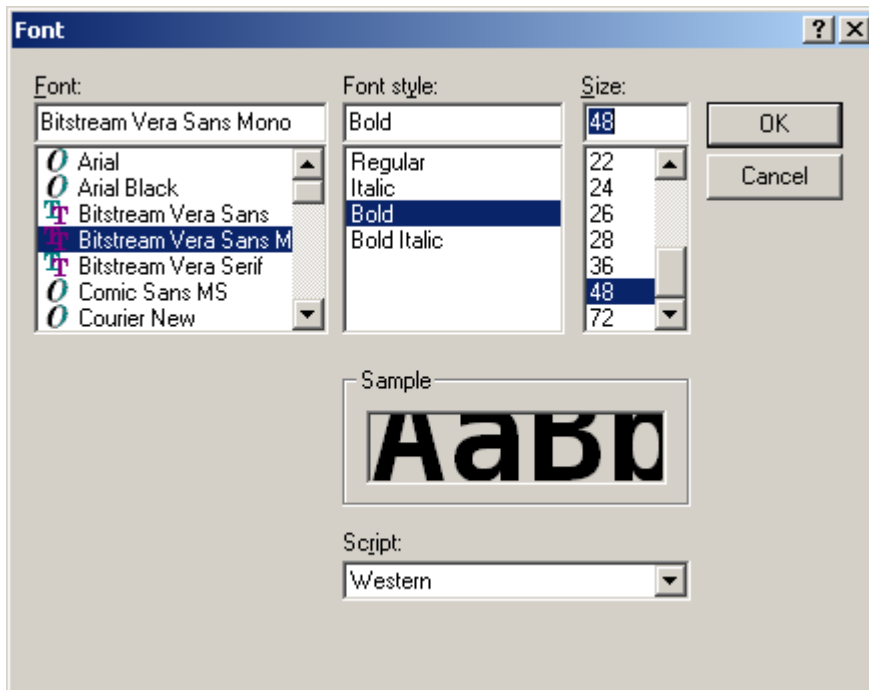
2.1.4 Choose new font

Click on the "Change..." button in the "Create new Font" window:



Rubidium Application: Font compiler

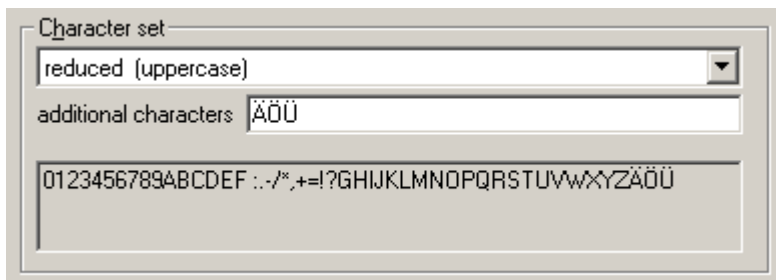
Choose the applicable font "Bitstream Vera Sans Mono", "Bold", "48":



If this particular font is not installed and available on your PC, it can be downloaded here <http://www.gnome.org/fonts/> . This particular font can be used free of charge and you can read all the licensing details on their web page.

2.1.4.1 Select character set

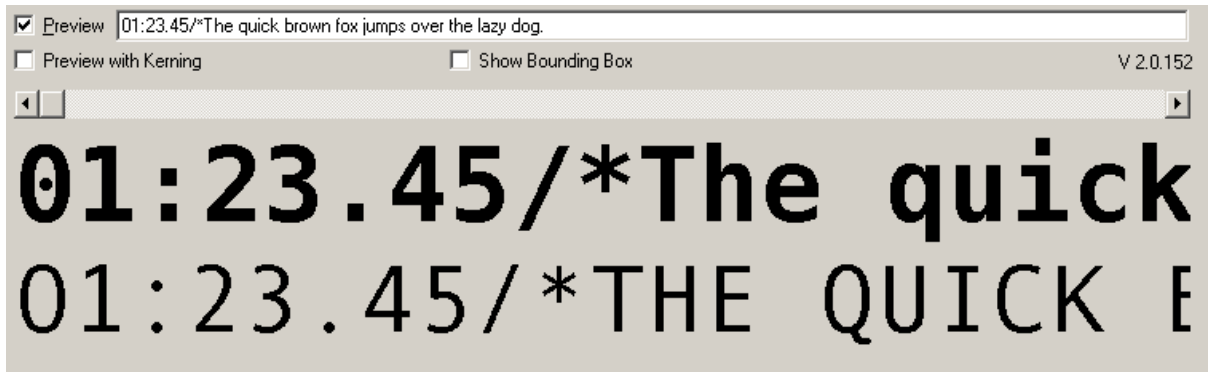
The memory capacity in Rubidium modules is not unlimited, we therefore recommend only uploading the required or most commonly used characters. These options can be selected, and is shown below in the "Character Set" window:



All numbers and usually just a few characters are required for most normal Time Code applications but you can include any available characters. In this example, we have included all numbers, the uppercase characters and included as "additional character" three special uppercase characters often used in the German language. The grey area previews all the characters that have been selected.

2.1.4.2 Display preview window

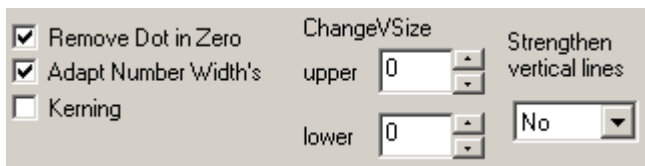
To confirm the actual look of the font you can enter demonstrational characters into the "preview" line and check the "Preview" box:



The upper line shows the new selected font "Bitstream Vera Sans Mono" and the bottom line shows the present font in this case called "45" out of the existing TCF file that is going to be replaced.

2.1.4.3 Choosing options



The new font can now be optimized for the insertion with the following options:

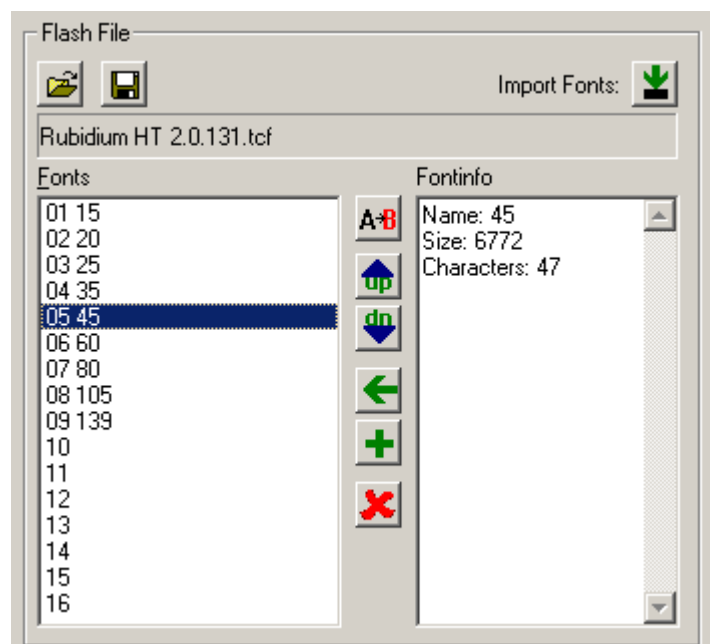


Select "Remove Dot in Zero" and "Adapt Number Width's" which brings all characters to the same width, which is mandatory for all Time Code insertions.

The option "Kerning" is active when supported by the hardware of the module. With kerning, the spacing between certain characters is adjusted to get a smoother appearance.

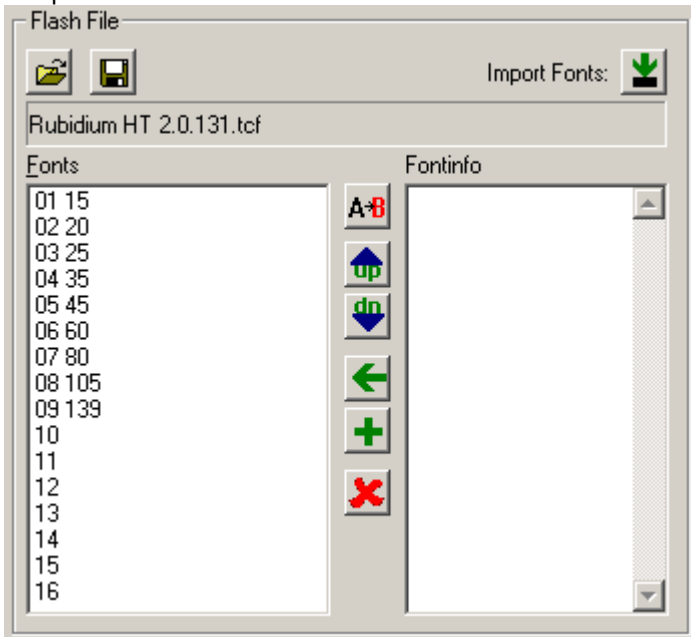
2.1.4.4 Adding the font


The font is now ready to be added to firmware located in the TCF file. Select the fifth font "05 45", which you would like to replace with this new font and then click the "replace" button . The font on position 05 will be replaced by the new one. You can change the automatically created name by pressing the button "rename"  and typing in the new name.

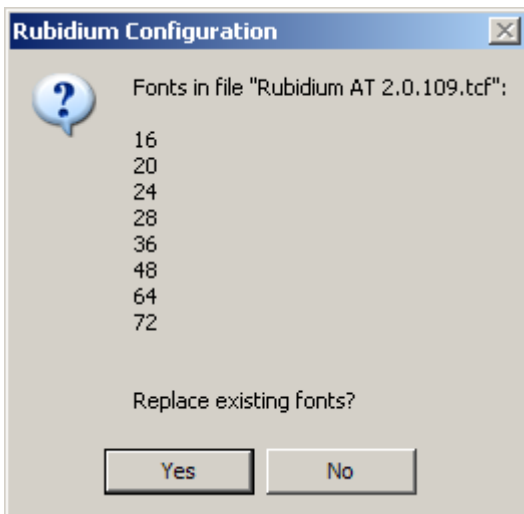


2.1.5 Import fonts

To import fonts from another tcf file, you have to load the target file first, as described in chapter 2.1.3. The available fonts from this file will be displayed.




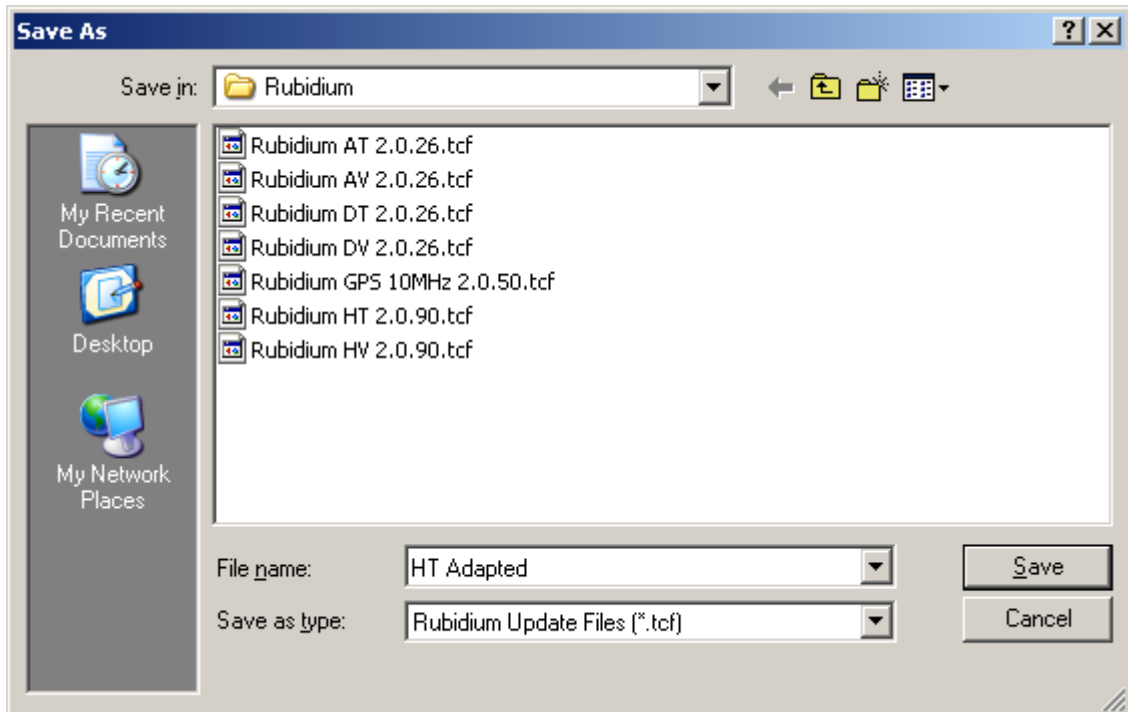
To select the tcf file from which to load the fonts, use the button "Import Fonts" . Seek and open the file (for example „Rubidium AT 2.0.109.tcf“). A list of the fonts will be presented.



Now you can start the import by clicking "Yes" or abort it with the "No" button. When importing fonts, the old fonts will be replaced.

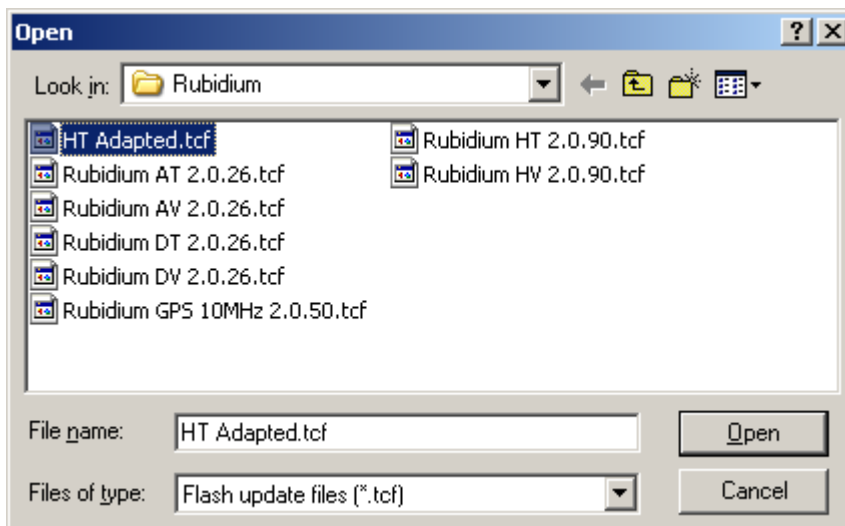
2.1.6 Save TCF file

The completed TCF-file can now be saved onto your hard drive. Click on the  button and then we suggest choosing a descriptive new file name to save the updated TCF file:



2.1.7 Flashing the TCF-file to the module

This new TCF-file can now be flashed into the HT-module. To do this you must close the font compiler part of the “Rubidium Config” program and connect the HT module housing via a RS232-connection to your computer. After this, select under the functions tab “File / Flash Update...” your newly composed tcf file:



Now the new font is available for selection in the Font tab in the program “Rubidium Config” program.